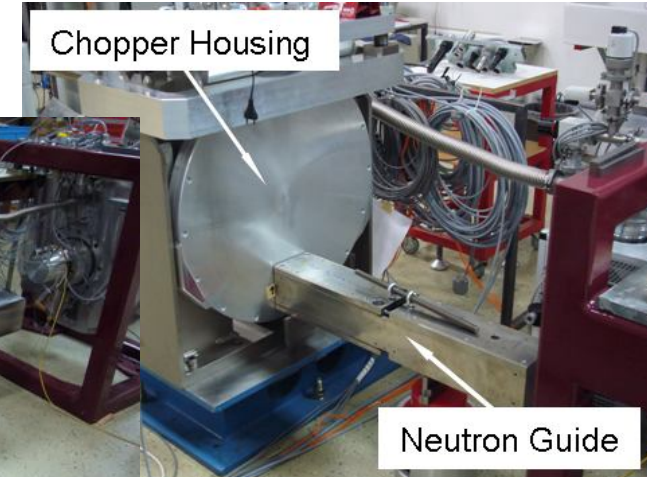
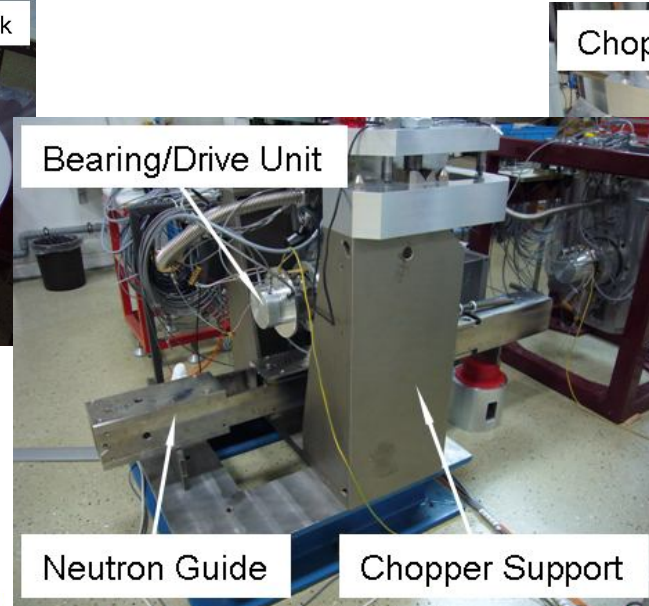
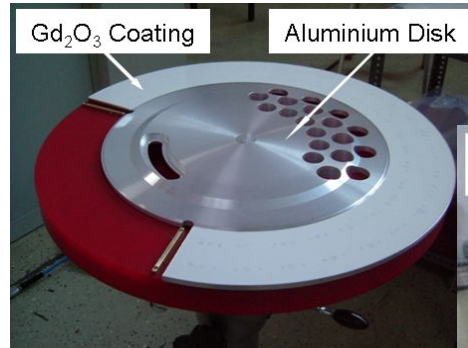
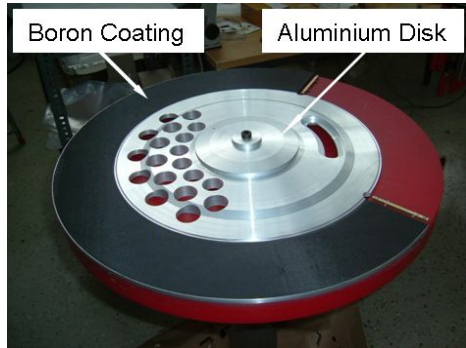


Al-Chopperscheiben für polarisierte Neutronen

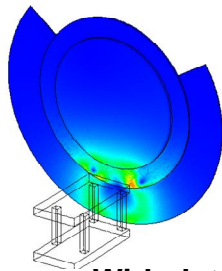
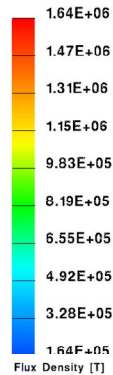
NSE-Chopperkaskade für SNS, Oak Ridge, TN, USA

Wirbelstromverluste in Al-Scheiben (3.600 min^{-1}) bei äußerem Magnetfeld (30 mT)



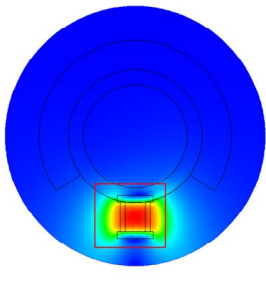
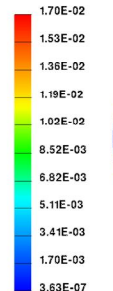
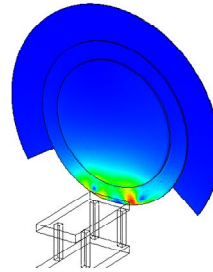
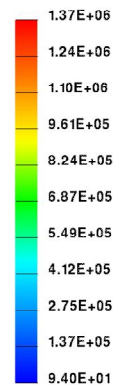
Berechnungen

Eddy Current Density [A/m²]

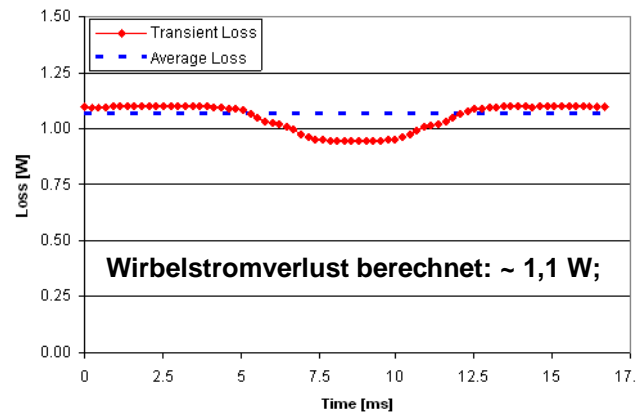


Wirbelstromdichte

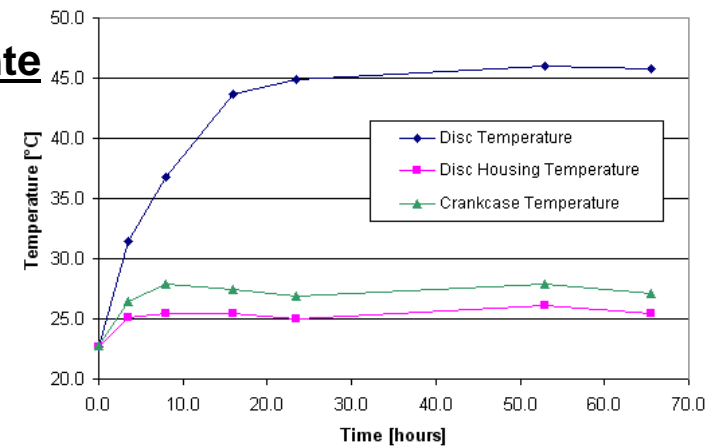
Eddy Current Density [A/m²]



Flussdichte



Experimente



Temperaturerhöhung durch Wirbelstrom

Wirbelstromverlust gemessen: ~ 1,4 W